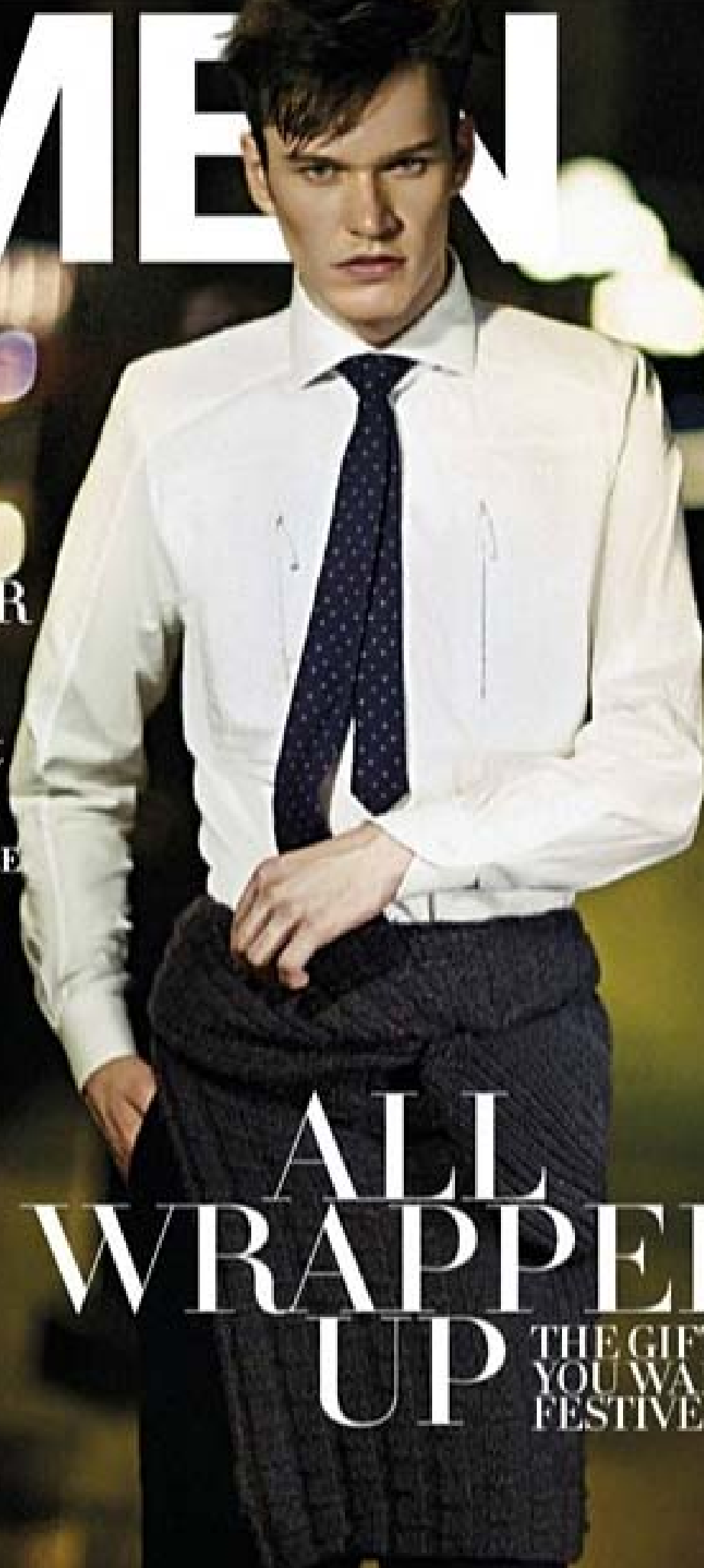


style **MEN**

**WHAT
TO WEAR**
DRESS CODE
DECODED

**PRIMP &
PROPER**
HOW TO PUT
YOUR BEST FACE
FORWARD



**ALL
WRAPPED
UP**

THE GIFTS
YOU WANT THIS
FESTIVE SEASON





Birthday **TREAT**

art direction JASPER LOH photography AIK CHEN

Lhe regular A Lange & Söhne 1815 Chronograph is a thoroughbred. Besides a workhorse chronograph movement, it boasts strong and clean design elements coupled with dominant German watch aesthetics. But the watchmaker has one-upped itself with this handsome boutique edition. The case is crafted out of white gold, and the solid silver dial features dark navy elements — Arabic numerals, railway-tracked minute scale, pulsometric scale, steeled seconds and subdial hands — complemented with rhodiumed gold hour and minute hands. Conceived to celebrate the 200th birthday of founder Ferdinand Lange, the column-wheel chronograph is only available in the 15 brand boutiques worldwide.

1815 Chronograph Boutique Edition by A LANGE & SÖHNE.

Special thanks LAMINTAK